

# Stainless steel ball valves, reduced bore

234 series, welding / welding, EN (DIN), DN 100-250, reduced bore

Body	DN 100-250 Stainless steel, X2CrNiMo17-12-2 (1.4404)
Ball	DN 100-250 Stainless steel, X2CrNiMo17-12-2 (1.4404)
Ball seal	DN 100-250 PTFE+C
Stem	DN 100-250 Stainless steel, X2CrNiMo17-12-2 (1.4404)
Stem seal	DN 100-250 FPM/NBR
Operation	DN 100-250 Valve is equipped with manual gear



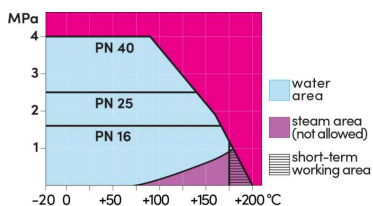
## Operation conditions

-20 °C – +200 °C

Below -20 °C contact manufacturer

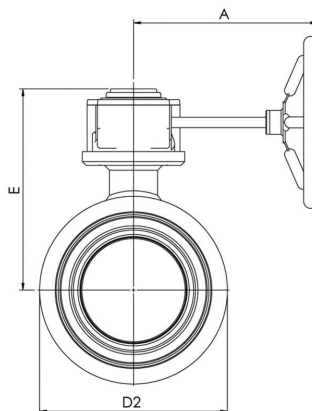
Lowest allowed ambient temperature -40 °C

Leakage rate A (EN 12266-1)

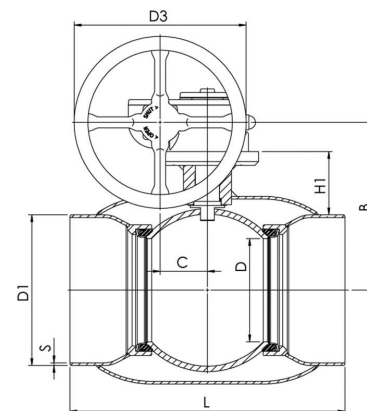


Not for steam

DN 100-250



DN 100-250



DN	PN	Product no.	A	B	C	D	D1	D2	D3	E	H1	L	S	kg
100	25	234100	187	159	53	80	114.3	139.7	125.0	202	68	325	3,0	13.0
125	25	234125	224	183	53	100	139.7	178.0	200.0	225	79	325	4,0	20.0
150	25	234150	224	203	53	125	168.3	219.1	200.0	246	85	350	4,0	23.0
200	25	234200	268	244	69	150	219.1	273.0	250.0	293	92	400	4,0	40.0
250	25	234250	301	294	97	200	273.0	355.6	300.0	345	108	530	4,0	77.0